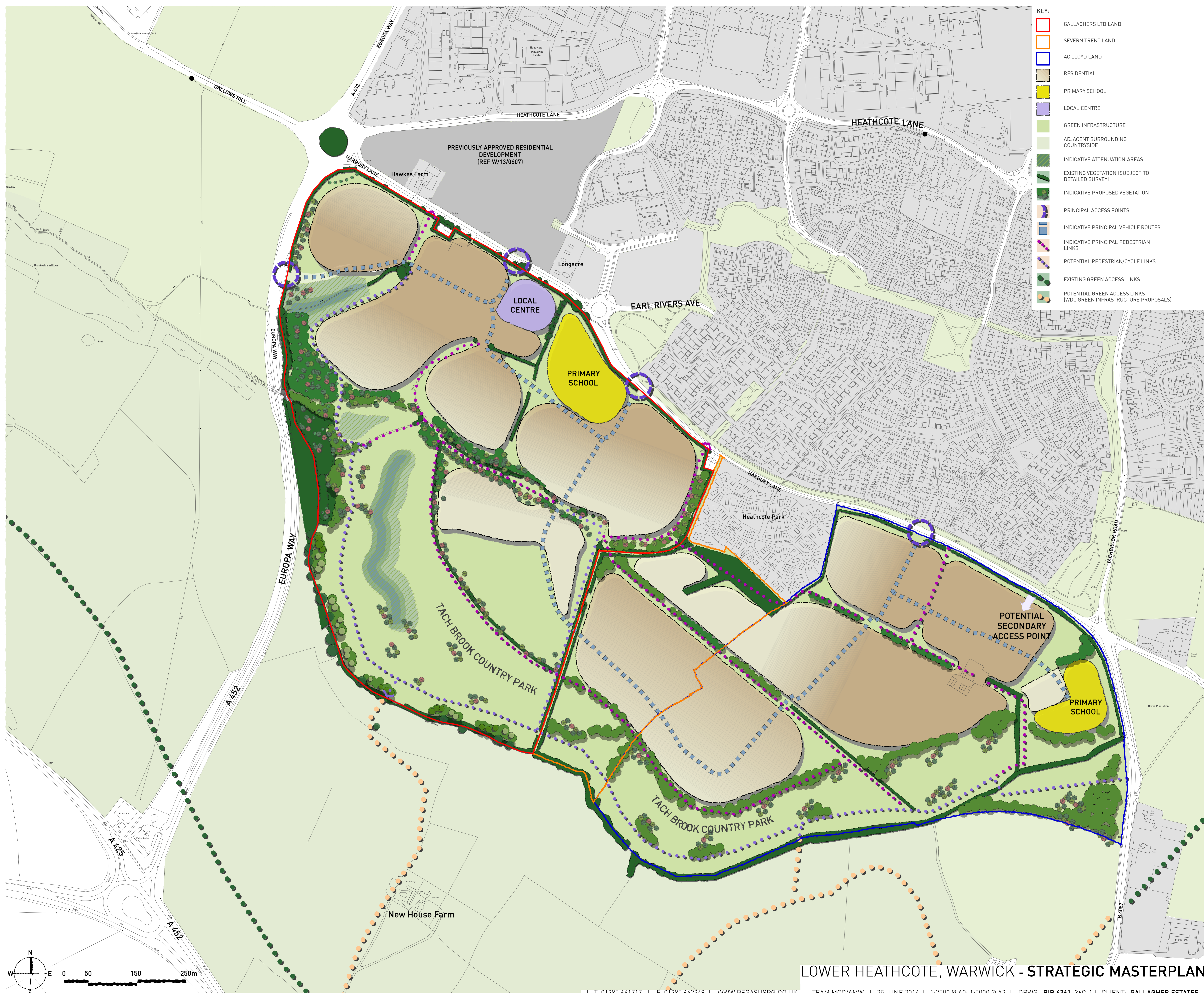


© Copyright Pegasus Planning Group Ltd. © Crown copyright. All rights reserved. Ordnance Survey Copyright Licence number 1000450363. I Promap Licence number 100020419. Drawings prepared for planning application purposes and can be scaled (drawings are not to be used for construction or sales documents). Please refer to client for development design risk assessment documents. Pegasus Urban Design is part of Pegasus Planning Group Ltd. Any queries to be reported to Pegasus for clarification.

- KEY:**
- GALLAGHERS LTD LAND
 - SEVERN TRENT LAND
 - AC LLOYD LAND
 - RESIDENTIAL
 - PRIMARY SCHOOL
 - LOCAL CENTRE
 - GREEN INFRASTRUCTURE
 - ADJACENT SURROUNDING COUNTRYSIDE
 - INDICATIVE ATTENUATION AREAS
 - EXISTING VEGETATION (SUBJECT TO DETAILED SURVEY)
 - INDICATIVE PROPOSED VEGETATION
 - PRINCIPAL ACCESS POINTS
 - INDICATIVE PRINCIPAL VEHICLE ROUTES
 - INDICATIVE PRINCIPAL PEDESTRIAN LINKS
 - POTENTIAL PEDESTRIAN/CYCLE LINKS
 - EXISTING GREEN ACCESS LINKS
 - POTENTIAL GREEN ACCESS LINKS (WDC GREEN INFRASTRUCTURE PROPOSALS)



LOWER HEATHCOTE, WARWICK - STRATEGIC MASTERPLAN

