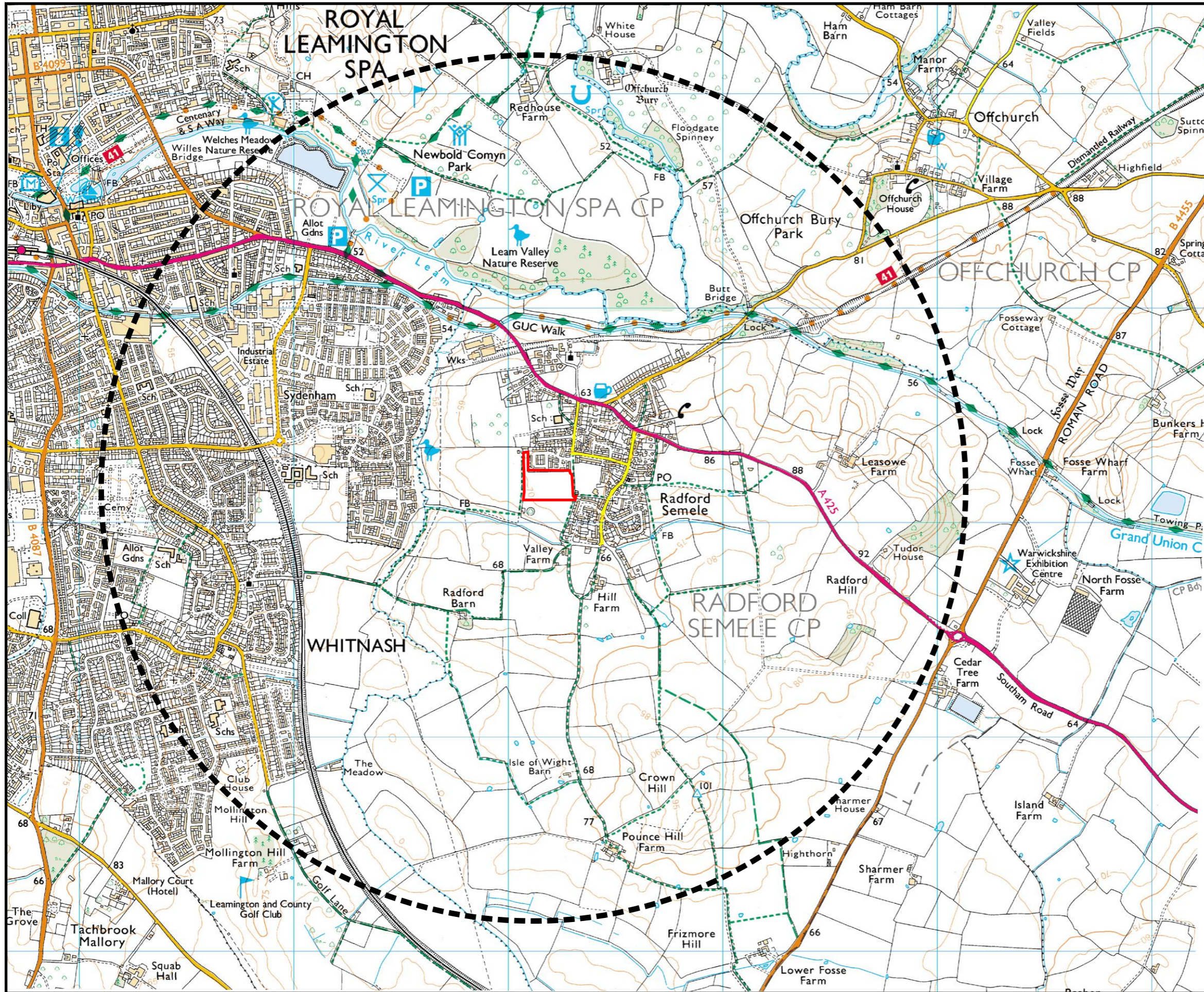




**Appendix 1 to Landscape and Visual Assessment for Land at Spring Lane, Radford Semele**  
Figures and Photographs





The copyright to this drawing belongs to JB Landscapes and shall not be reproduced without their written consent. Do not scale from this drawing.

**LEGEND**

- The Site
- 2.0km Radius Study Area

Rev. Details

**Title**  
**Figure 1**  
 Location Plan

**Project**  
 Spring Lane, Radford Samele

**J B Landscape Associates**  
 Wharf Centre Studio Telephone: 01926 217990  
 Wharf Street Email: john.baly@jbla.co.uk  
 Warwick Mobile: 0780 136 5965  
 CV34 5LB

The copyright to this drawing belongs to JB Landscapes and shall not be reproduced without their written consent. Do not scale from this drawing.

**LEGEND**

 The Site



© 2013 Google  
© 2014 Infoterra Ltd & Bluesky

Rev. Details

**Title**

**Figure 2**  
Aerial Photograph  
Google Earth

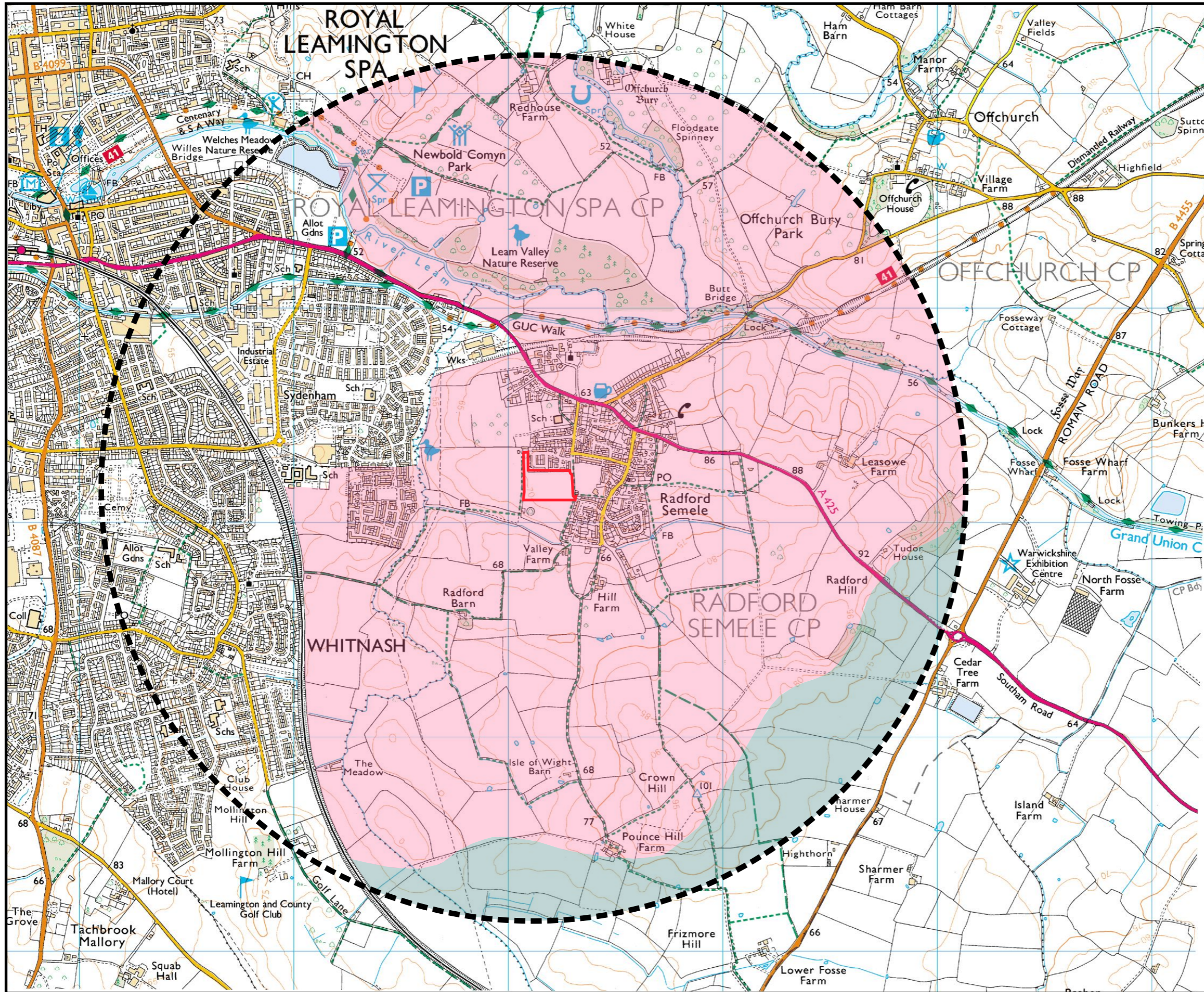
**Project**

Spring Lane, Radford Samele

**J B Landscape Associates**

Wharf Centre Studio  
Wharf Street  
Warwick  
CV34 5LB

Telephone: 01926 217990  
Email: john.baly@jbla.co.uk  
Mobile: 0780 136 5965



The copyright to this drawing belongs to JB Landscapes and shall not be reproduced without their written consent. Do not scale from this drawing.

**LEGEND**

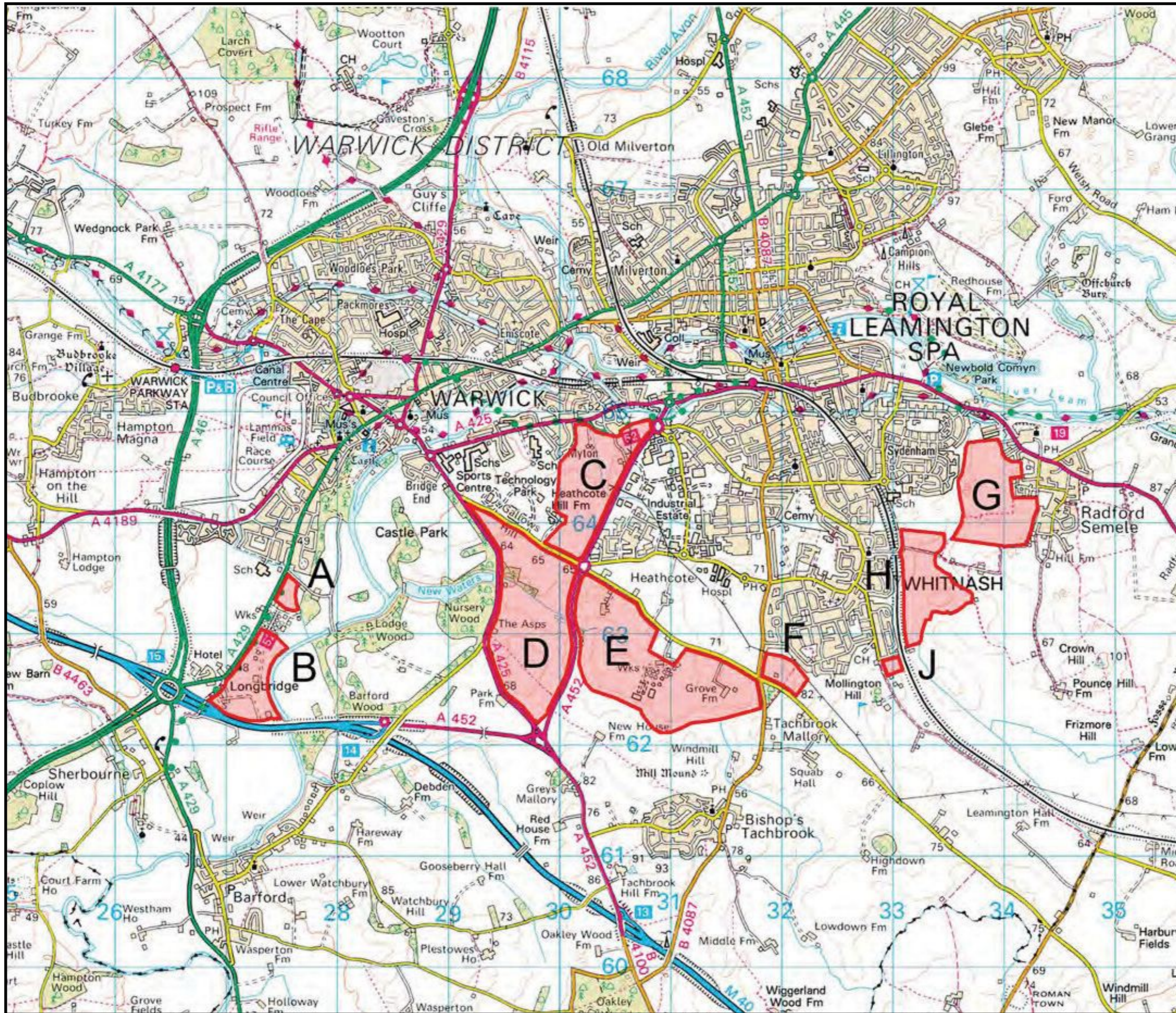
- The Site
- 2.0km Radius Study Area
- Dunsmore Landscape Character Area  
Plateau Fringe LCT
- Feldon Landscape Character Area  
Vale Farmlands LCT

Rev. Details

**Title**  
**Figure 3**  
 Landscape Character  
 Extract from Warwickshire Landscape Project (1993)

**Project**  
 Spring Lane, Radford Samele

**J B Landscape Associates**  
 Wharf Centre Studio Telephone: 01926 217990  
 Wharf Street Email: john.baly@jbla.co.uk  
 Warwick Mobile: 0780 136 5965  
 CV34 5LB



The copyright to this drawing belongs to JB Landscapes and shall not be reproduced without their written consent. Do not scale from this drawing.

**LEGEND**

- A Land at Stratford Road
- B Home Farm, Longbridge
- C Europa Way triangle
- D Land south of Gallows Hill
- E Land south of Harbury Lane
- F Land at Woodside Farm
- G Land east of Sydenham
- H Land south of Sydenham
- J Land south of Fieldgate Lane

Rev. Details

**Title**

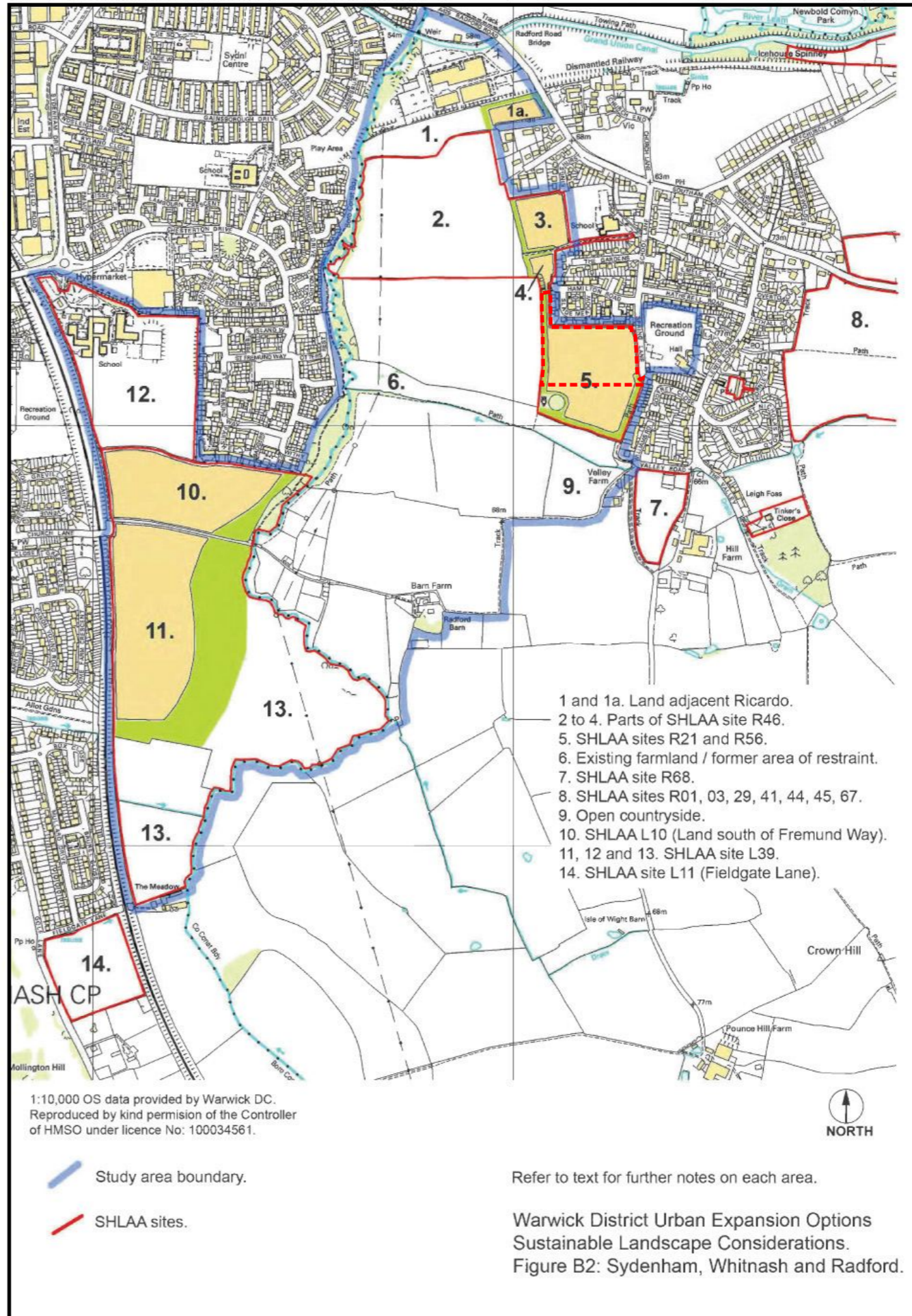
**Figure 4**  
Plan Extract from 'Landscape Character Assessment for Land South of Warwick & Leamington (Feb 2009):Richard Morish Associates Ltd

**Project**

Spring Lane, Radford Samele


**J B Landscape Associates**

Wharf Centre Studio Telephone: 01926 217990  
Wharf Street Email: john.baly@jbla.co.uk  
Warwick Mobile: 0780 136 5965  
CV34 5LB



The copyright to this drawing belongs to JB Landscapes and shall not be reproduced without their written consent. Do not scale from this drawing.

**LEGEND**

 The Site

Rev. Details

**Title**

**Figure 5**

Plan Extract from 'Options for future urban extension in Warwick District: Considerations for sustainable landscape planning (Nov 2012); Richard Morrish Associates Ltd

**Project**

Spring Lane, Radford Samele

**J B Landscape Associates**

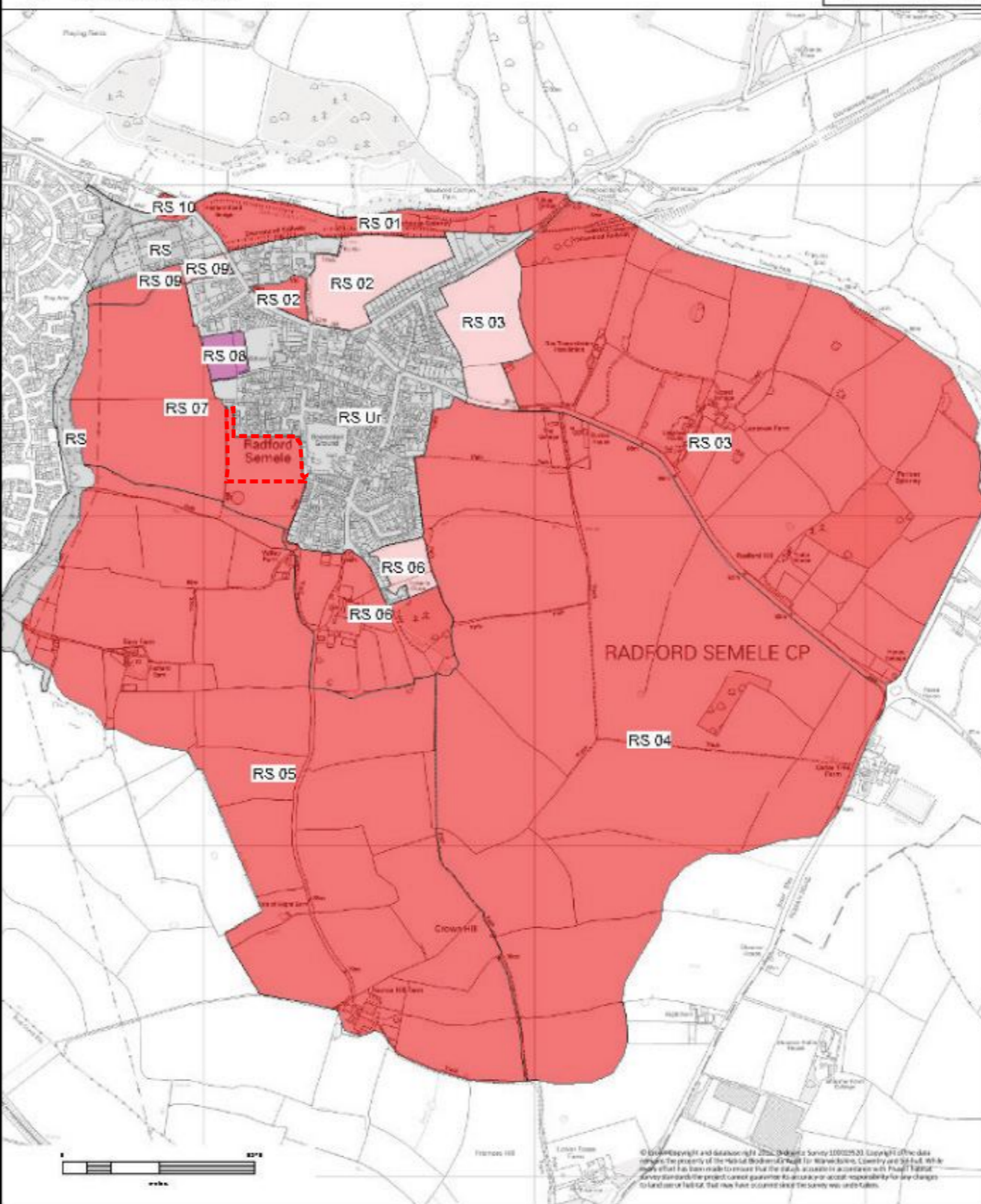
Wharf Centre Studio  
 Wharf Street  
 Warwick  
 CV34 5LB

Telephone: 01926 217990  
 Email: john.baly@jbla.co.uk  
 Mobile: 0780 136 5965



HABITAT BIODIVERSITY AUDIT  
Warwickshire Historic and Natural Environment  
Barrack Street  
Warwick  
CV34 4TH  
Tel: 01926 412 197  
Email: hbs@warwickshire.gov.uk

**RADFORD SEMELE LANDSCAPE SENSITIVITY TO HOUSING DEVELOPMENT**



**Sensitivity to Housing Development**

High	High/Medium	Medium	Medium/Low	Low	Not recorded
------	-------------	--------	------------	-----	--------------

LCP

Zone

PRINTED 11/11/2013

The copyright to this drawing belongs to JB Landscapes and shall not be reproduced without their written consent. Do not scale from this drawing.

**LEGEND**

The Site

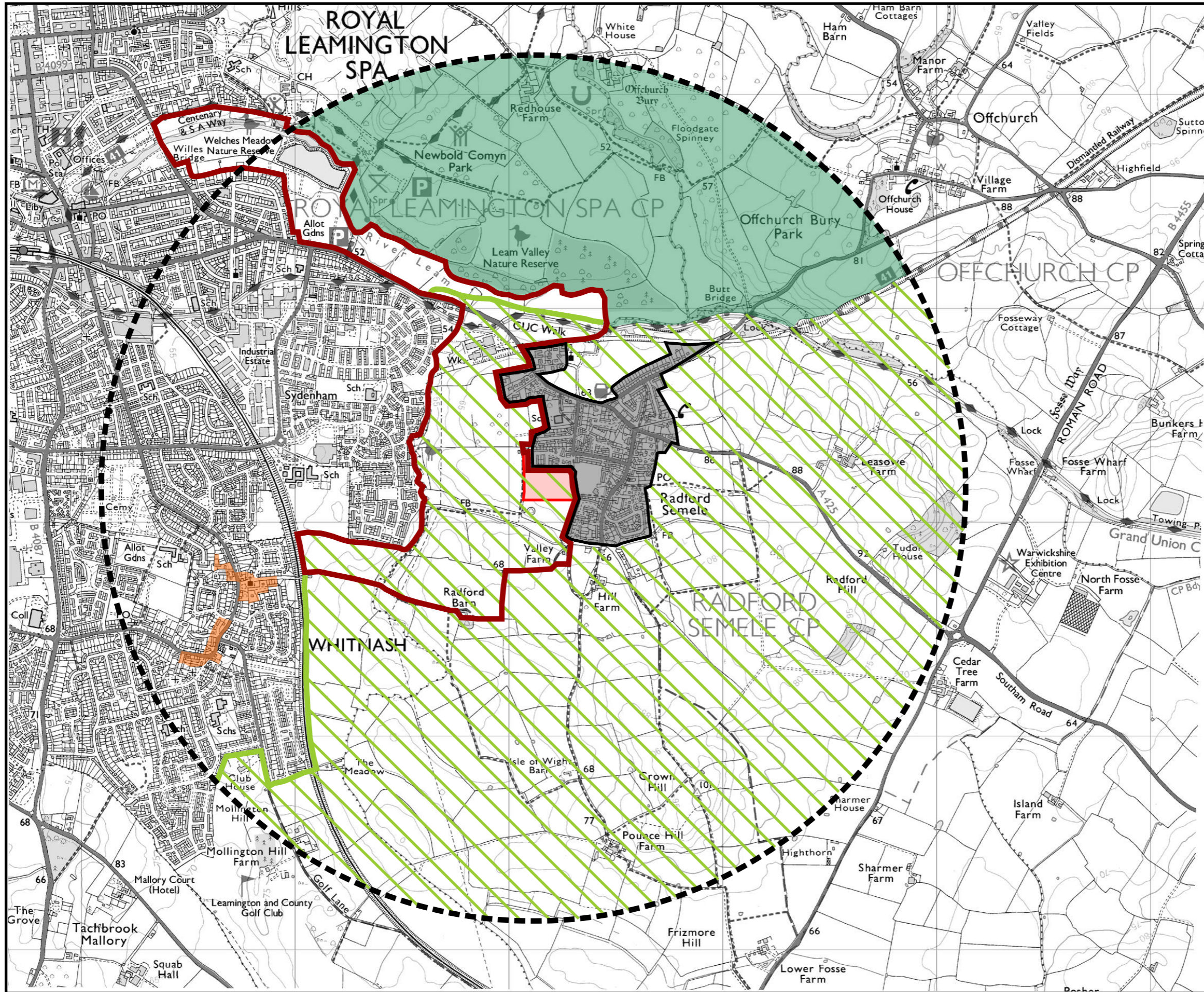
Rev.	Details

**Title**  
**Figure 6**  
Radford Semele: Sensitivity to Housing Development (Extract from WCC's Landscape Sensitivity and Ecological Study (Nov 2013))

**Project**  
Spring Lane, Radford Semele

**J B Landscape Associates**  
Wharf Centre Studio  
Wharf Street  
Warwick  
CV34 5LB  
Telephone: 01926 217990  
Email: john.baly@jbla.co.uk  
Mobile: 0780 136 5965





The copyright to this drawing belongs to JB Landscapes and shall not be reproduced without their written consent. Do not scale from this drawing.

**LEGEND**

- The Site
- 2.0km Radius Study Area
- Area of Restraint
- Green Belt
- Rural Areas Policies
- Whitnash Conservation Areas
- Limited Growth Village Envelope
- Whitnash Conservation Areas

Rev. Details

**Title**  
**Figure 7**  
 Relevant Local Plan Environment Policy Designations  
 (Extract from the WDC Local Plan Proposals Map 2010)

**Project**  
 Spring Lane, Radford Samele

**J B Landscape Associates**  
 Wharf Centre Studio Telephone: 01926 217990  
 Wharf Street Email: john.baly@jbla.co.uk  
 Warwick Mobile: 0780 136 5965  
 CV34 5LB