

A = 1164
R = 7456

KEYHAVEN CONSULTING LIMITED

KITES NEST FARM, BEAUSALE, WARWICK, CV35 7PB

Tel: 01926 484295

Fax: 01926 484365

Email: rjwandsew@btinternet.com

2 August 2012

The Development Policy Manager
Development Services
Warwick District Council
Riverside House
Milverton Hill
Leamington Spa
CV32 5QH

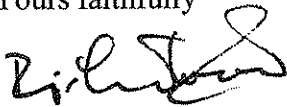
Dear Sir

Preferred Options
Mr R Ogg – Barford

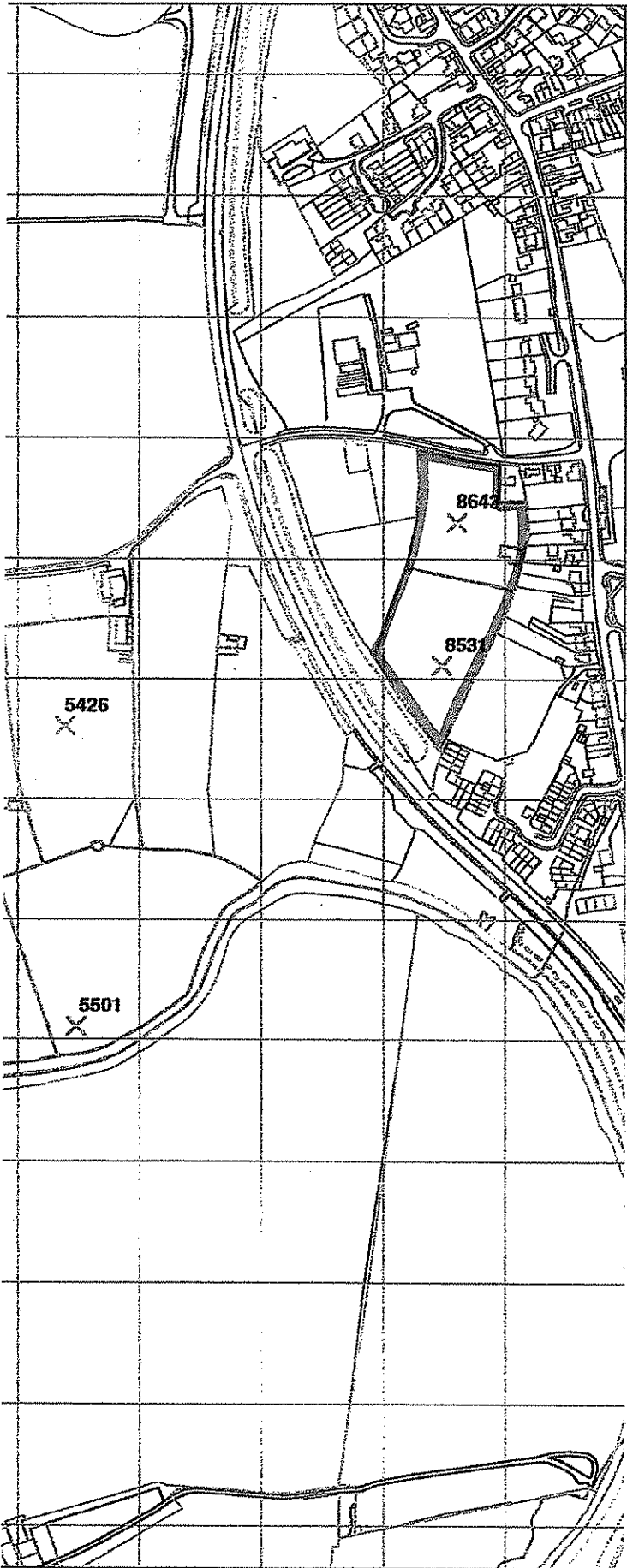
I refer to the Response Form submitted on behalf Mr Ogg on 27 July.

The plan included with the response did not include all the land in his ownership. Accordingly, I enclose a revised plan which I would be grateful if you would substitute for the one previously submitted.

Yours faithfully



Richard Wood



any changes to the parcels shown on it.